

Banner Financial Aid Overview

LASFAA Conference
Sandra Spraglin

The slide features a top image of a university campus with a central domed building. Below the image is a grey header with the SunGard Higher Education logo. The main content area is white with the title and speaker information.

Introduction

- Sandra Spraglin
- SunGard Higher Education
- Financial Aid Principal Functional Consultant
- 30 years with Higher Education
- 6 years with Sungard Higher Education
- Sandra.Spraglin@sungardhe.com

2

Goal

- Describe the main features and primary forms for the Banner Financial Aid system modules.

3

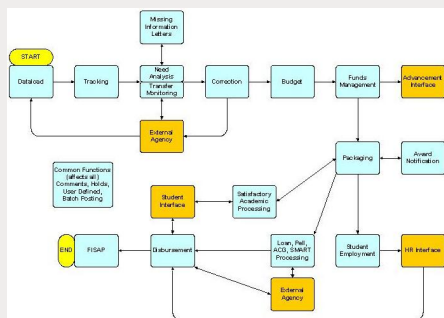
Objectives

- Identify where in the Financial Aid process Banner interacts with people, institutions, and other systems
- Explain the purpose of each module
- Discuss QuickFlows and explain how they can be used in the FA system

Agenda

- Financial Aid Process
- Financial Aid System
- Financial Aid Modules
- Quick Flows
- What's New in Banner 8 Financial Aid

Financial Aid Process



Financial Aid System

- Financial Aid [*RESOURCE]
- Applicant Processing [*RESAPPL]
- Need Analysis [*RESNEED]
- Requirements Tracking [*RESTRACK]
- Budgeting [*RESBUDG]
- Packaging and Disbursement [*RESPACK]
- Funds Management [*RESFUND]
- Electronic Data Exchange [*RESEDE]
- History and Transcripts [*RESHIST]
- Financial Aid Common Functions [*RESCOMN]
- Student System Shared Data [*RESSHARE]
- Short-Term Credit [*RESSHORT]
- Student Employment [*RESEMPPL]
- Loan Processing [*RESLOAN]
- Return of Title IV Funds [*RESTRFND]

7

Financial Aid Modules- Applicant Processing

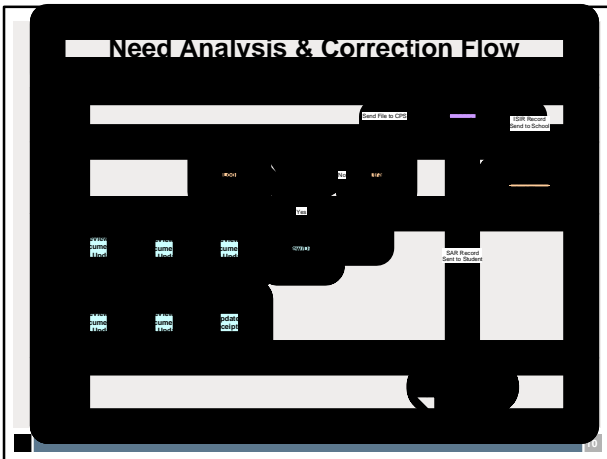
- Using the Applicant Processing module enables you to
 - access forms with which to conduct day-to-day processing of student financial aid information

8

Financial Aid Modules- Need Analysis Menu

- Using the Need Analysis module enables you to
 - calculate the student's financial need based on the difference between the packaging budget and the calculated Expected Family Contribution (EFC) from the Federal Methodology (FM) and/or Institutional Methodology (IM) results
 - Features:
 - Multiple Application Sources
 - Online or Batch Calculations
 - Multiple Methodologies
 - EDE Corrections

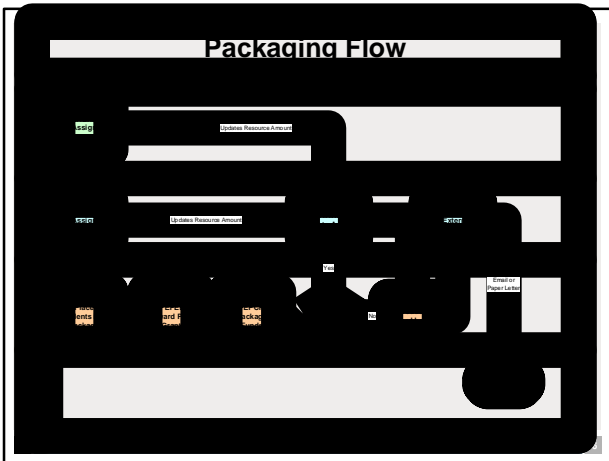
9

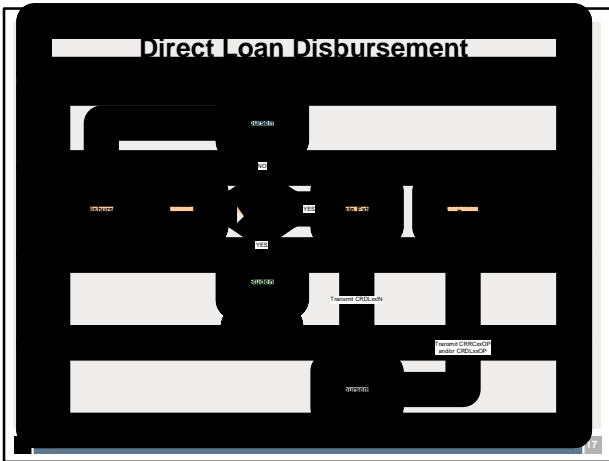


Financial Aid Modules - Requirements Tracking

- Using the Requirements Tracking module enables you to
 - define an unlimited number of documents or statuses that students need to submit or complete
 - These requirements control whether a student is eligible to be packaged or receive a payment of aid
- Features:
 - Requirement Definition
 - Grouping of Students
 - Mass Entry
 - Letter Generation







Financial Aid Modules- Athletics

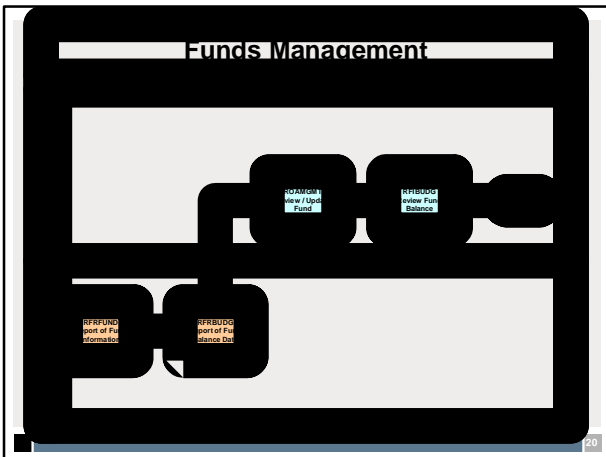
- Using the Athletics module enables you to
 - support the scholarship and athletics enhancement
- Links to the following forms were added to this new menu
 - Potential Athletic Grant Defaults (RAAPAGD)
 - Financial Aid Sport Aid by Term (RAASPTM)
 - Team Sport Term Aid (RAITMTM)

18

Financial Aid Modules- Funds Management

- Using the Fund Management module enables you to
 - define and monitor an unlimited number of funds, fund types, and fund associated eligibility rules for the purposes of awarding and disbursing financial aid

19



20

Financial Aid Modules- Electronic Data Exchange

- Using the Electronic Data Exchange and its communication software, you can
 - receive ISIRs
 - send Pell corrections
- Features:
 - Applicant Record Creation
 - Online Need Analysis
 - ISIR Corrections
 - Payment Processing
 - Data File Generation/Data Request Files

21

**Financial Aid Modules-
Financial Aid Common Functions**

- Using the Financial Aid Common Functions module enables you to
 - maintain frequently used financial aid functions
 - Holds
 - User defined
 - » Aid year and non Aid Year
 - Comments
 - Logging
 - Standards of Academic Progress
 - FISAP
 - High School Form (ACG)
 - New Year roll

25

Financial Aid Modules- Student System Shared Data

- Using the Student System Shared Data module enables you to
 - integrate the Banner Student system with Financial Aid
 - view information in Recruiting, Admissions, Registration, Housing, Accounts Receivable, and Academic History

26

Financial Aid Modules- Short-Term Credit

- Using the Short-Term Credit module allows you to
 - build history files on a student's short period loans

27

Financial Aid Modules- Student Employment

- Using Student Employment module enables you to
 - perform the referral, placement, hours submission, and tracking functions for student employees
 - Feed from Banner Payroll
 - Features:
 - Work Authorization
 - Departmental Time Reports

28

Financial Aid Modules- Loan Processing

- Using the Loan Processing module enables you to
 - process Direct Loans, FFELP Common Line loans, and manual loans

29

Financial Aid Modules- Return of Title IV Funds

- Using Return of Title IV Funds module and Title IV Authorization module functionality assists you in
 - complying with the Title IV regulations for federal financial aid
 - Features:
 - Identify Title IV payments, institutional charges, period of enrollment, and refund detail codes
 - Record authorizations from students to authorize the use of Title IV aid to pay in-direct charges, prior year minor institutional charges, and/or hold excess Title IV aid for future use
 - Allow application of payments to pay off only allowable charges, or to pay off all charges based on user authorization

30

Financial Aid Modules- Return of Title IV Funds

—Features (cont.):

- Identify original charges as required for the return calculation
- Define break periods within the period of enrollment
- Identify Title IV recipients who have fully withdrawn or are no longer in attendance
- Determine the enrollment period and the point in the period that enrollment terminated
- Determine a student's institutional charges, Title IV aid, and percentage of enrollment period completed in order to calculate the Title IV repayment
- Determine the amount of Title IV aid that should be returned to the Title IV programs by the institution and/or student, or allowable post-withdrawal disbursed to the student
- Refund Title IV credits

31

Quick Flows

- Quick Flows

—QuickFlow form (GUAQLW)

- permits you to call a pre-defined sequence of forms established by the QuickFlow Definition form (GUAQUIK)

32

What's New in Banner 8 Financial Aid

- Requirements By Term Enhancements
- Fund Enhancements
- Algorithmic Packaging
- Scholarship and Athletics Enhancement
- Award Locks Enhancements
- New Activate/Inactivate functionality and Group Information
- Purge/Archive Data
- Term Based Holds
- Batch Posting Enhancements
- Banner General Updates

33

REFERENCES

The following references can be reviewed for more detailed, comprehensive descriptions of the Banner 8 functional enhancements and changes, as well as the related technical changes:

Banner FA Release Guide 8.0	Banner FA Release Guide 8.1
Banner FA Release Guide 8.2	Banner FA Release Guide 8.2.1
Banner FA Release Guide 8.3	Banner FA Release Guide 8.3.1
Banner FA Release Guide 8.4	Banner FA Release Guide 8.4.1
Banner FA Release Guide 8.4.2	Banner FA Release Guide 8.4.2.1
Banner FA Release Guide 8.5	Banner FA User's Guide 8.4

34



BUNGARD HIGHER EDUCATION

Questions and Answers



BUNGARD HIGHER EDUCATION

Thank you for your participation

